



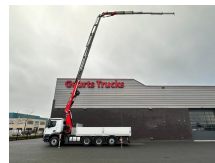
+31 488 74 54 74
info@geurtstrucks.com

Buskesdries 14
6673 DP,
Andelst
netherlands

Mercedes-Benz L 8X4 + FASSI F545RA.2.26 XE-DYNAMIC + JIB L426 KRAAN/KRAN/CRANE/GRUA

General-specifications

Id	1789924
Make	Mercedes-Benz
Type	L 8X4 + FASSI F545RA.2.26 XE-DYNAMIC + JIB L426 KRAAN/KRAN/CRANE/GRUA
Year	2023
Operating hours	335
Mileage	9.956 km
Construction	Truck-mounted crane
Emissionclass	6



Technical-specifications

Extras

Air conditioning	LED lights
Air horn	Low-noise
Air suspension	Navigation system
Aluminium fuel tank	Particulate filter
Anti-lock braking system	PTO
Coupling	Radio/cassette player
Cruise control	Reversing camera
Electrically adjustable door mirrors	Speed limiter
Electrically operated windows	Stability control
Fog lights	Toolbox
Heavy duty engine brake	Visor



+31 488 74 54 74
info@geurtstrucks.com

Buskesdries 14
6673 DP,
Andelst
netherlands

First registration date	02-08-2023
Fuel	Diesel
Transmission	Automatic
Vehicle identification number	4671
Axle configuration	8x4
Axle count	4
Weight	20.925 kg
Power kw	338
Power hp	460
Lifting height	3.250 cm
Lifting capacity	15.500 kg

€ On request